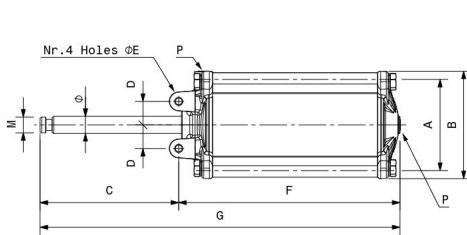




## RIV 164

Double-acting pneumatic jack  
Gladio series

### Tech drawings and tables



DN	Code	Ø	F	A	B	C	D	E	G	M	P	KG	P/box
4"	050164000016	22	236,5	125	137	131,5	30	M10	368	20	1/4"	7,468	1
5"	050164000018	22	261,5	125	137	156,5	30	M10	418	20	1/4"	7,746	1
6"	050164000019	22	281,5	125	137	176,5	30	M10	458	20	1/4"	7,911	1
8"	050164000020	22	331,5	125	137	232,5	30	M10	564	22	1/4"	8,493	1
10"	050164000021	32	430	160	180	320,5	45	M12	750,5	28	1/4"	16,892	1

### Advantages

Created for better operation and longer life of RIV gate valves.

## Technical data

Limit	-10°C +80°C
Notes	<b>MINIMUM OPERATING PRESSURE:</b> 4", 5", 6" = 4 Bar (60 Psi) 8" = 5 Bar (75 Psi)
	<b>MAXIMUM OPERATING PRESSURE:</b> 12 Bar (175 Psi)